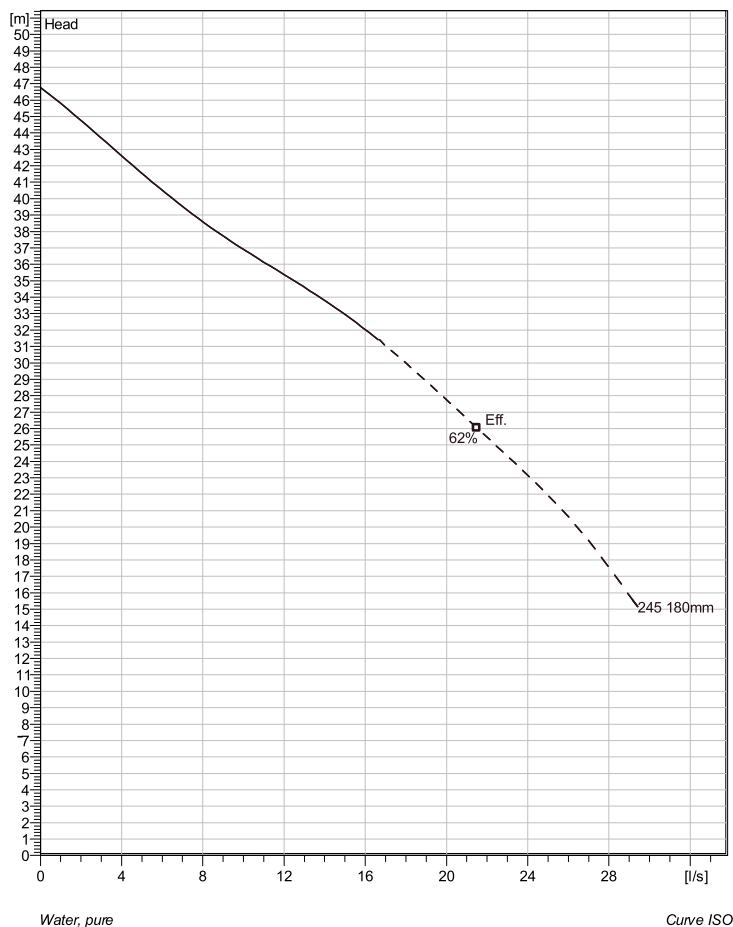


NP 3127 SH 3~ Adaptive 245

Technical specification



Note: Picture might not correspond to the current configuration.

General

Patented self cleaning semi-open channel impeller, ideal for pumping in most waste water applications. Possible to be upgraded with Guide-pin® for even better clogging resistance. Modular based design with high adaptation grade.

Impeller

Impeller material	Hard-Iron
Discharge Flange Diameter	80 mm
Suction Flange Diameter	90 mm
Impeller diameter	180 mm
Number of blades	2

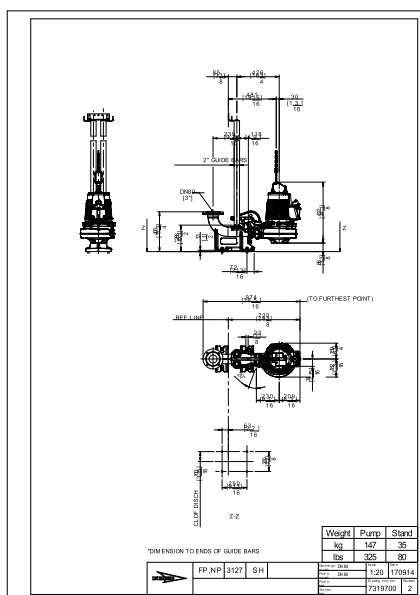
Motor

Motor #	N3127.920 21-11-2AS-W IE3 8.5KW
Stator variant	38
Frequency	50 Hz
Rated voltage	400 V
Number of poles	2
Phases	3~
Rated power	8.5 kW
Rated current	16 A
Starting current	126 A
Rated speed	3000 rpm
Power factor	
1/1 Load	0.84
3/4 Load	0.82
1/2 Load	0.74
Pump efficiency	
1/1 Load	90.6 %
3/4 Load	90.1 %
1/2 Load	87.9 %

IE3 Rating is based on Y connection

Configuration

Installation: P - Semi permanent, Wet



NP 3127 SH 3~ Adaptive 245



Performance curve

Pump

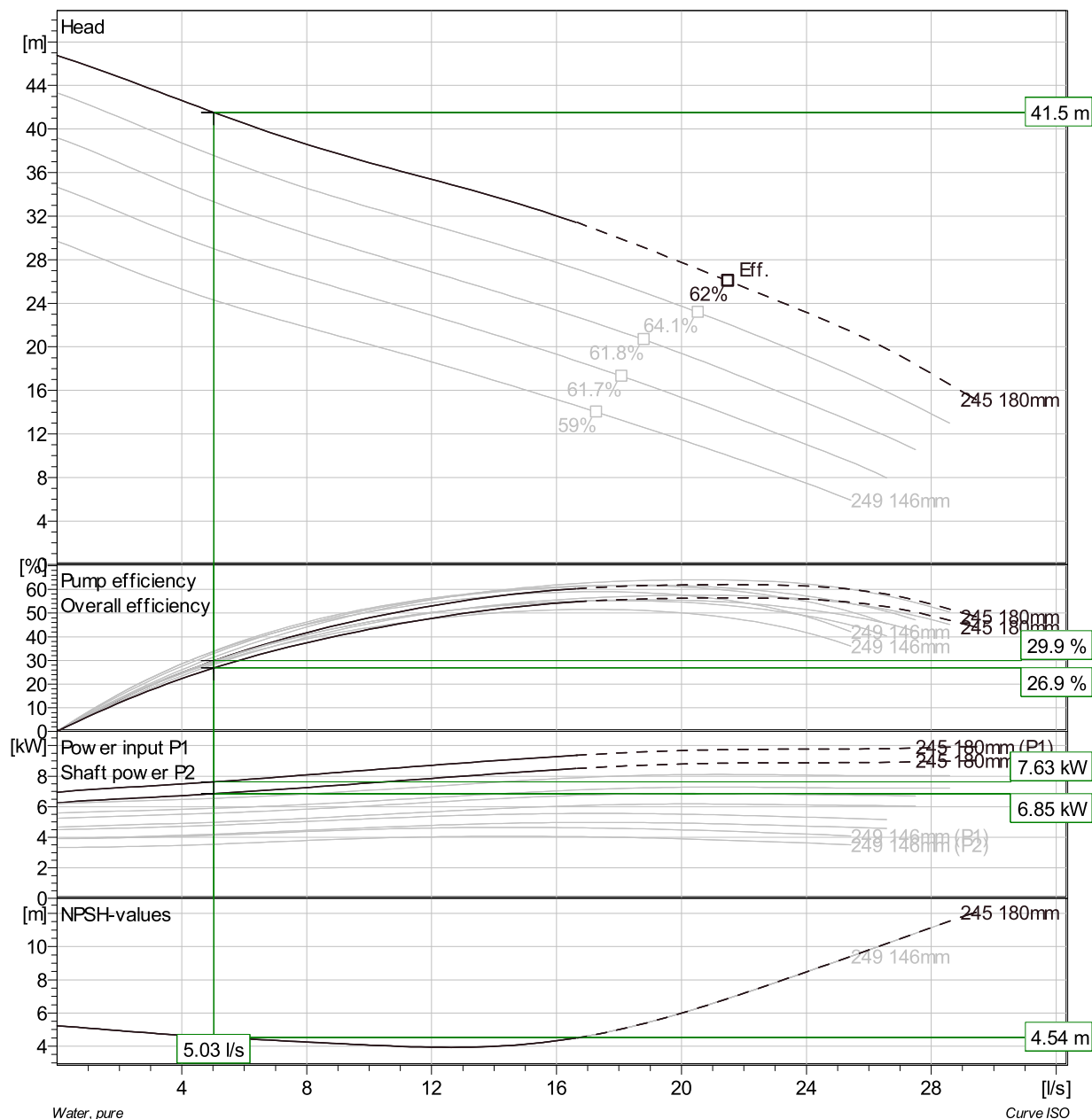
Discharge Flange Diameter 80 mm
Suction Flange Diameter 90 mm
Impeller diameter 180 mm
Number of blades 2

Motor

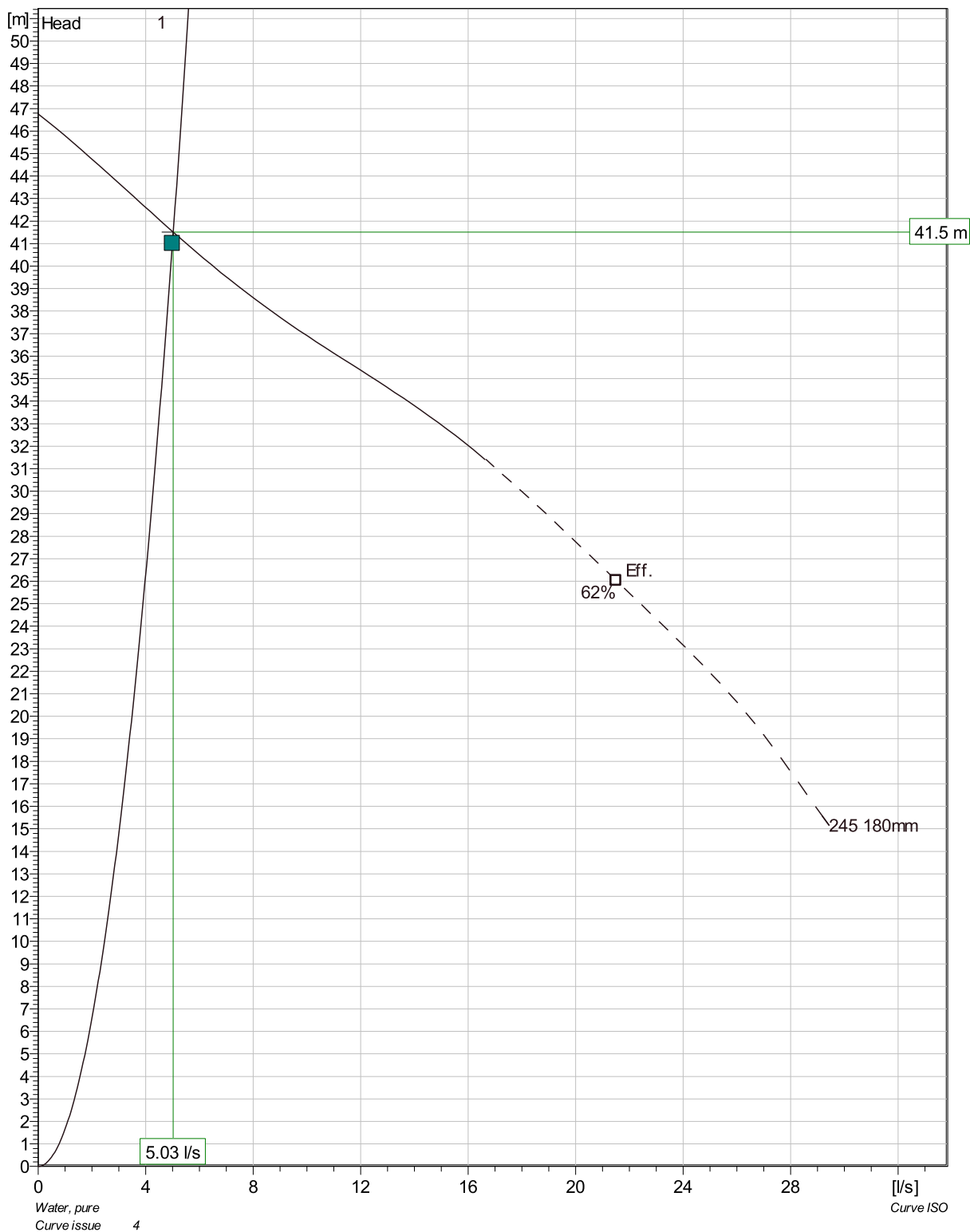
Motor # N3127.920 21-11-2AS-W IE3 8.5KW
Stator variant 38
Frequency 50 Hz
Rated voltage 400 V
Number of poles 2
Phases 3~
Rated power 8.5 kW
Rated current 16 A
Starting current 126 A
Rated speed 3000 rpm
IE3 Rating is based on Y connection

Power factor
1/1 Load 0.84
3/4 Load 0.82
1/2 Load 0.74

Pump efficiency
1/1 Load 90.6 %
3/4 Load 90.1 %
1/2 Load 87.9 %



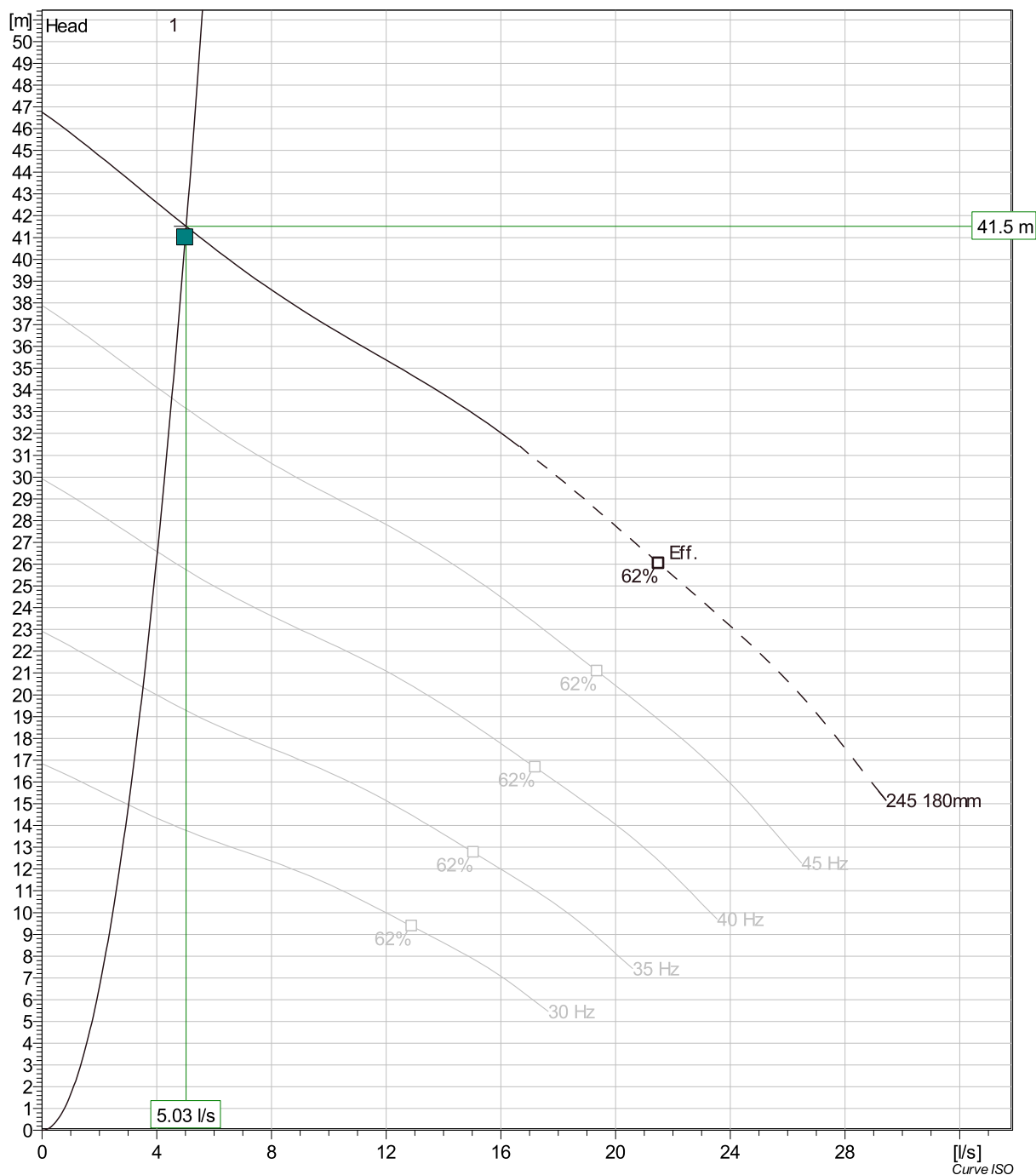
NP 3127 SH 3~ Adaptive 245 Duty Analysis



Pumps running /System	Individual pump			Total			Pump eff.	Specific energy	NPSHre
	Flow	Head	Shaft power	Flow	Head	Shaft power			
1	5.03 l/s	41.5 m	6.85 kW	5.03 l/s	41.5 m	6.85 kW	29.9 %	0.421 kWh/m³	4.54 m

Project	Project ID	Created by	Created on	Last update
Prilepy CS 1	A-18-168	Ing. Marek Néma	8/15/2018	

NP 3127 SH 3~ Adaptive 245 VFD Analysis



Pumps running /System	Frequency	Flow	Head	Shaft power	Flow	Head	Shaft power	Pump eff.	Specific energy	NPSHre
1	50 Hz	5.03 l/s	41.5 m	6.85 kW	5.03 l/s	41.5 m	6.85 kW	29.9 %	0.421 kWh/m ³	4.54 m
1	45 Hz	4.53 l/s	33.6 m	4.99 kW	4.53 l/s	33.6 m	4.99 kW	29.9 %	0.342 kWh/m ³	3.84 m
1	40 Hz	4.02 l/s	26.6 m	3.51 kW	4.02 l/s	26.6 m	3.51 kW	29.9 %	0.282 kWh/m ³	3.18 m
1	35 Hz	3.52 l/s	20.3 m	2.35 kW	3.52 l/s	20.3 m	2.35 kW	29.9 %	0.229 kWh/m ³	2.57 m
1	30 Hz	3.02 l/s	14.9 m	1.48 kW	3.02 l/s	14.9 m	1.48 kW	29.9 %	0.18 kWh/m ³	2.01 m

Project	Project ID	Created by	Created on	Last update
Prilepy CS 1	A-18-168	Ing. Marek Néma	8/15/2018	

NP 3127 SH 3~ Adaptive 245

Dimensional drawing

